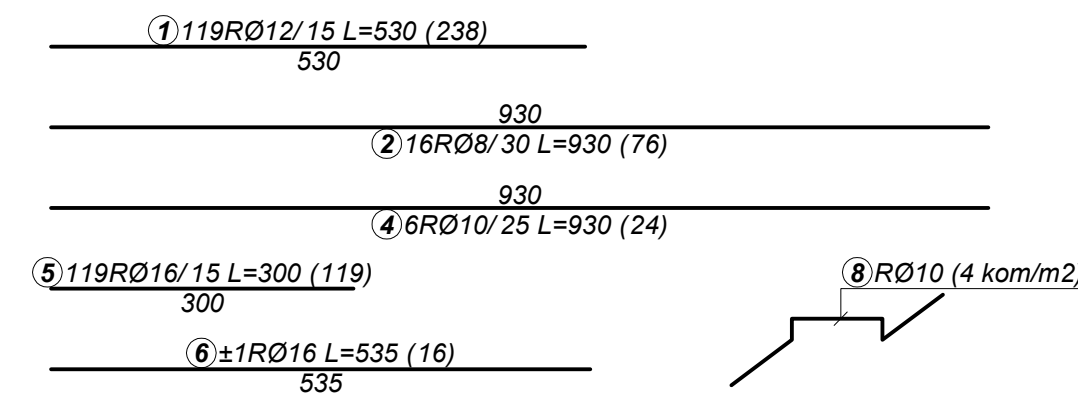
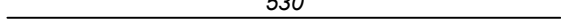
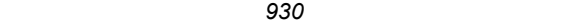
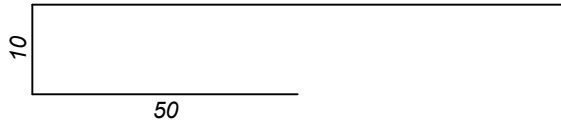
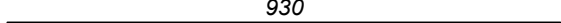

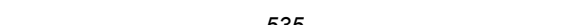
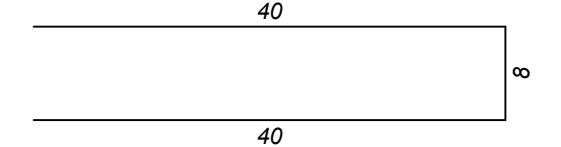
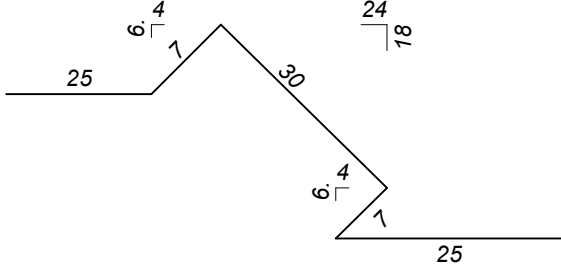


Šipke - rekapitulacija			
Ø [mm]	lgn [m]	Jed.težina [kg/m']	Težina [kg]
RA2			
8	763.12	0.405	309.06
10	505.20	0.633	319.79
12	1453.40	0.911	1324.05
16	442.60	1.621	717.45
Ukupno			2670.36

KOLIČINA BETONA:  $V_b = 26.19 \text{ m}^3$   
 KOLIČINA ARMATURE:  $\frac{2670.36}{26.19} = 102.0 \text{ kg/m}^3$



<b>GRAĐEVINSKI FAKULTET UNIVERZITETA U BEOGRADU</b>				
MODUL MTI		KATEDRA ZA MATERIJALE I KONSTRUKCIJE		
BETONSKE KONSTRUKCIJE 2		PRIMER P01 - LIST br.2		
PREDMETNI NASTAVNIK: PROF.DR S. MARINKOVIĆ	ASISTENT: M. STOJANOVIĆ	KANDIDAT:		
<b>PLAN ARMATURE POS 1</b>				
KVALITET MATERIJALA MB 30 RA 400/500	RAZMERA CRTEŽA R 1:75 (25)	FORMAT CRTEŽA 580×297	ŠKOLSKA 2016/2017. 02.10.2016.	OVERA:

<b>Šipke – specifikacija uz List br.2</b>						
ozn.	oblik i mere [cm]	Č	Ø	lg [cm]	n [kom]	lgn [m]
<b>POS 1 (1 kom)</b>						
1	530 	RA2	12	530	238	1261.40
2	930 	RA2	8	930	76	706.80
3	100 10 50 	RA2	12	160	120	192.00
4	930 	RA2	10	930	24	223.20
5	300 	RA2	16	300	119	357.00
6	535 	RA2	16	535	16	85.60
7	40 8 40 	RA2	8	88	64	56.32
8	25 6 4 1 30 24 18 6 4 1 25 	RA2	10	94	300	282.00
<b>Šipke - rekapitulacija uz List br.2</b>						
Ø [mm]	lgn [m]	Jedinična težina [kg/m']		Težina [kg]		
<b>RA2</b>						
8	763.12	0.405		309.06		
10	505.20	0.633		319.79		
12	1453.40	0.911		1324.05		
16	442.60	1.621		717.45		
<b>Ukupno</b>				<b>2670.36</b>		