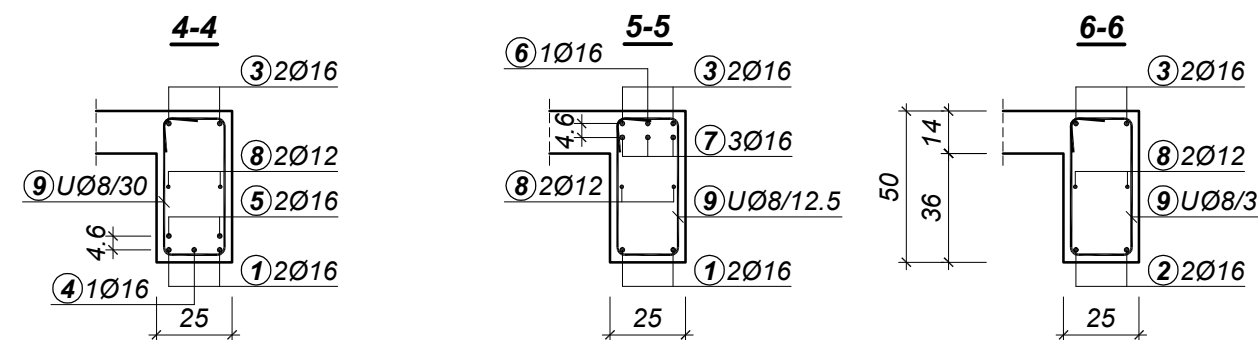
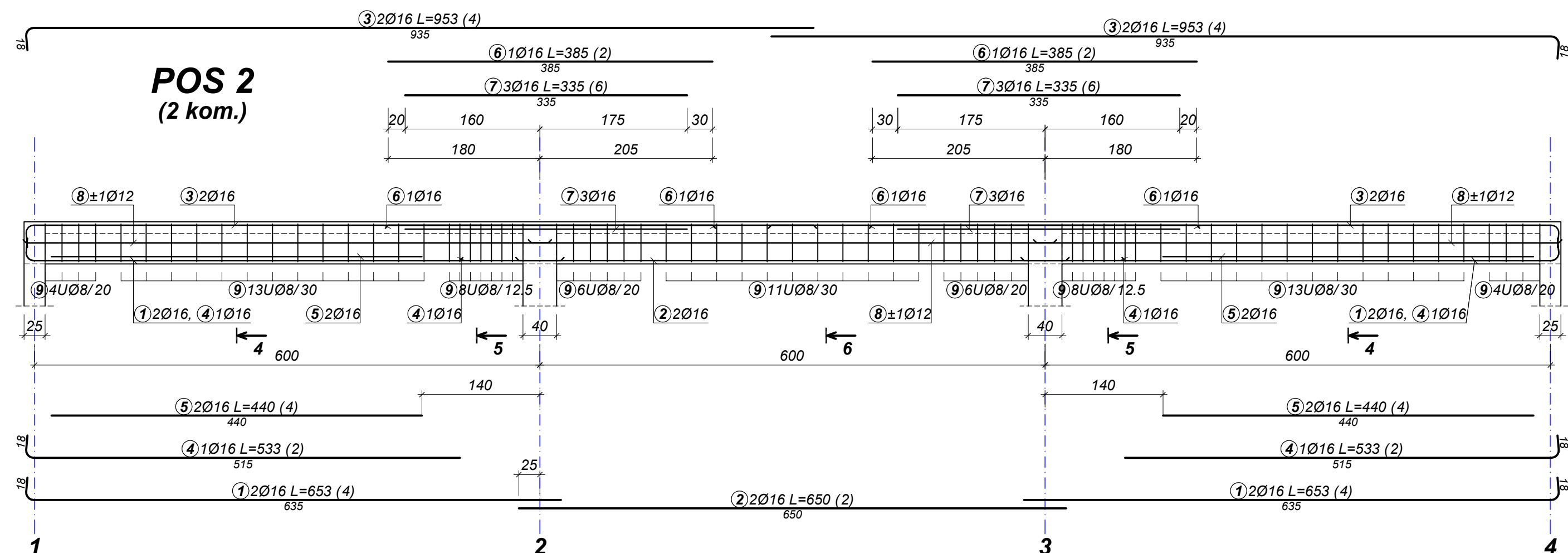
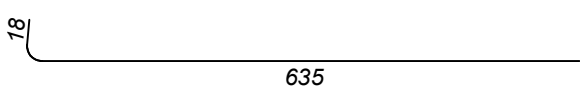

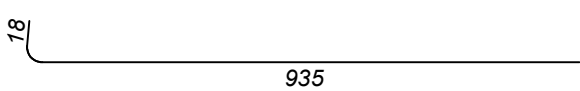
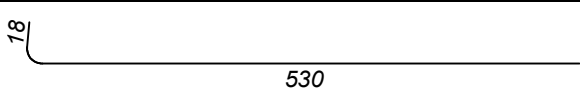
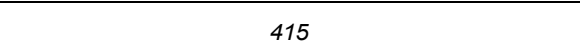
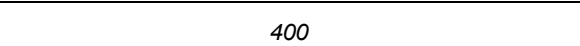

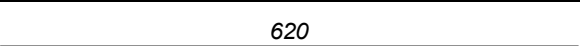
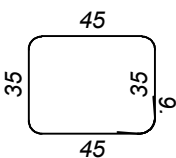


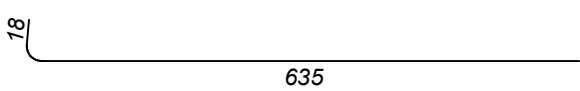

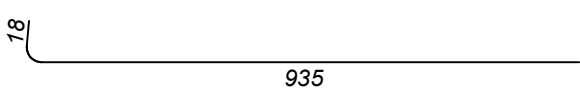

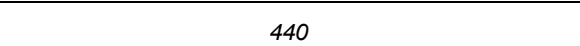
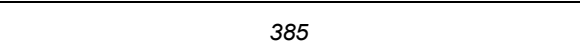
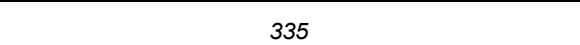
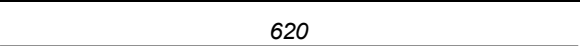
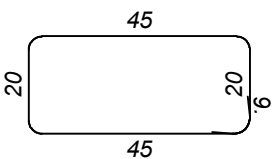
KOLIČINA BETONA: $V_b = 3.65 \text{ m}^3$
 KOLIČINA ARMATURE: $\frac{347.80}{3.65} = 95.3 \text{ kg/m}^3$



KOLIČINA BETONA: $V_b = 2 \times 2.28 = 4.56 \text{ m}^3$
 KOLIČINA ARMATURE: $\frac{587.45}{4.56} = 128.8 \text{ kg/m}^3$

GRAĐEVINSKI FAKULTET UNIVERZITETA U BEOGRADU				
MODUL MTI		KATEDRA ZA MATERIJALE I KONSTRUKCIJE		
BETONSKE KONSTRUKCIJE 2		PRIMER P03 - LIST br. 3		
PREDMETNI NASTAVNIK: PROF.DR S. MARINKOVIĆ	ASISTENT: M. STOJANOVIĆ	KANDIDAT:		
PLAN ARMATURE POS 2, POS 3				
KVALITET MATERIJALA MB 30 RA 400/500	RAZMERA CRTEŽA R 1:50/20	FORMAT CRTEŽA 580×297	ŠKOLSKA 2016/2017. 10.10.2016.	OVERA:

Šipke – specifikacija uz List 3						
ozn.	oblik i mere [cm]	ozn.	Ø	lg [m]	n [kom]	lgn [m]
POS 3 (1 kom)						
1		RA2	16	6.53	4	26.12
2		RA2	16	6.50	2	13.00
3		RA2	16	9.53	4	38.12
4		RA2	16	5.48	4	21.92
5		RA2	16	4.15	4	16.60
6		RA2	16	4.00	7	28.00
7		RA2	16	2.80	4	11.20
8		RA2	12	6.20	6	37.20
9		RA2	8	1.78	87	154.86
Šipke - rekapitulacija						
Ø [mm]	lgn [m]	Jedinična težina [kg/m']		Težina [kg]		
RA2						
8	154.86	0.405		62.72		
12	37.20	0.911		33.89		
16	154.96	1.621		251.19		
Ukupno						347.80

Šipke – specifikacija uz List 3						
ozn.	oblik i mere [cm]	ozn.	Ø	lg [m]	n [kom]	lgn [m]
POS 2 (2 kom)						
1		RA2	16	6.53	8	52.24
2		RA2	16	6.50	4	26.00
3		RA2	16	9.53	8	76.24
4		RA2	16	5.33	4	21.32
5		RA2	16	4.40	8	35.20
6		RA2	16	3.85	4	15.40
7		RA2	16	3.35	12	40.20
8		RA2	12	6.20	12	74.40
9		RA2	8	1.48	146	216.08

Šipke - rekapitulacija

Ø [mm]	lgn [m]	Jedinična težina [kg/m']	Težina [kg]
RA2			
8	216.08	0.405	87.51
12	74.40	0.911	67.78
16	266.60	1.621	432.16
Ukupno			587.45

Šipke - rekapitulacija uz List br.3

Ø [mm]	lgn [m]	Jedinična težina [kg/m']	Težina [kg]
RA2			
8	370.94	0.405	150.23
12	111.60	0.911	101.67
16	421.56	1.621	683.35
Ukupno			935.25