

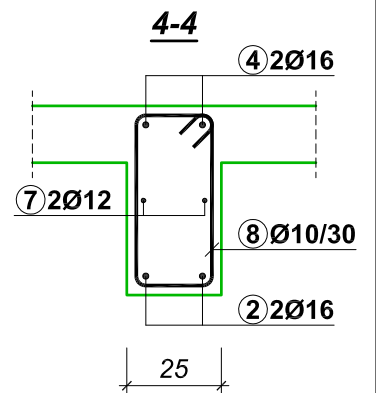
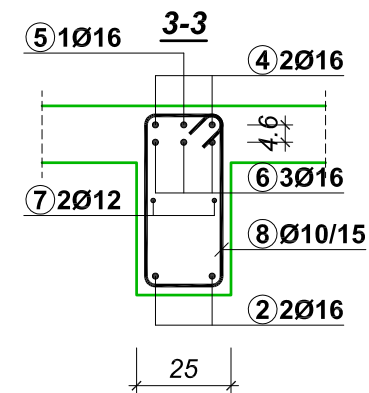
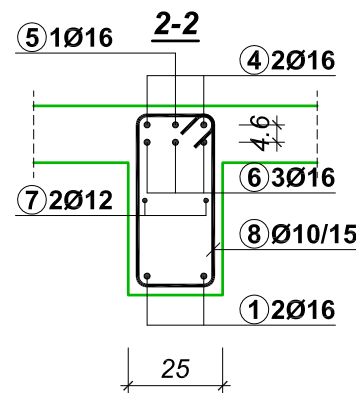
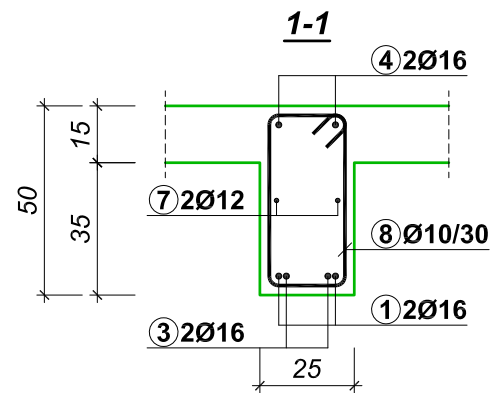
POS 2
(2 kom.)

Šipke - specifikacija

ozn.	oblik i mere [cm]	č	Ø	lg [m]	n [kom]	lgn [m]
POS 2 (1 kom)						
1		B500B	16	6.70	4	26.80
2		B500B	16	6.60	2	13.20
3		B500B	16	5.00	4	20.00
4		B500B	16	9.70	4	38.80
5		B500B	16	4.10	2	8.20
6		B500B	16	3.60	6	21.60
7		B500B	12	6.20	6	37.20
8		B500B	10	1.46	90	131.40

Šipke - rekapitulacija

Ø [mm]	lgn [m]	Jedinična težina [kg/m ³]	Težina [kg]
B500B			
8	131.40	0.617	81.07
12	37.20	0.888	33.03
16	128.60	1.578	202.93
Ukupno (B500B)			317.04



POS 2

KOLIČINA BETONA: $V_b = 2.28 \text{ m}^3$

KOLIČINA ARMATURE: $\frac{317.04}{2.28} = 139.1 \text{ kg/m}^3$

GRAĐEVINSKI FAKULTET UNIVERZITETA U BEOGRADU

MODUL MTI

KATEDRA ZA MATERIJALE I KONSTRUKCIJE

BETONSKE KONSTRUKCIJE 2

GODIŠNJI ZADATAK - LIST br.5

PREDMETNI NASTAVNIK:

dr Veljko KOKOVIĆ

ASISTENT:

dr Vedran CAREVIĆ

KANDIDAT:

M. Stojanović 715/81

PLAN ARMATURE GREDE POS 2

KVALITET MATERIJALA
C 25/30 B 500B

RAZMERA CRTEŽA
R 1:50/20

FORMAT CRTEŽA
420x297

ŠKOLSKA 2020/2021. OVERA:
19.10.2020.