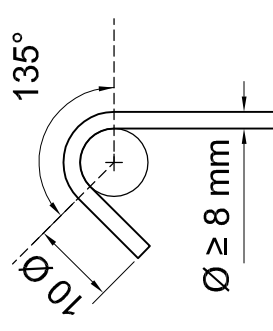
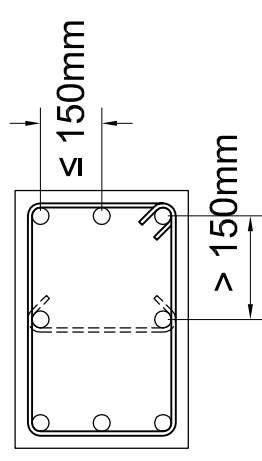


podužna armatura

$$A_{s,min} = \max \left\{ \begin{array}{l} 0.15 N_{Ed}/f_{yd} \\ 0.03 A_c \\ 4 \text{ } \varnothing 12 \text{ mm} \end{array} \right.$$

$$A_{s,max} = 0.04 A_c \text{ (} 0.08 A_c \text{)}$$

maksimalno rastojanje bočno pridržane i nepridržane šipke podužne armature



maksimalno podužno rastojanje poprečne armature

$$s_{cl.tmax} = \min \left\{ \begin{array}{l} 12 \varnothing_{l,min} \\ b_{c,min} \\ 300 \text{ mm} \end{array} \right.$$

$$s^2_{cl.tmax} = 0.6 s_{cl.tmax}$$