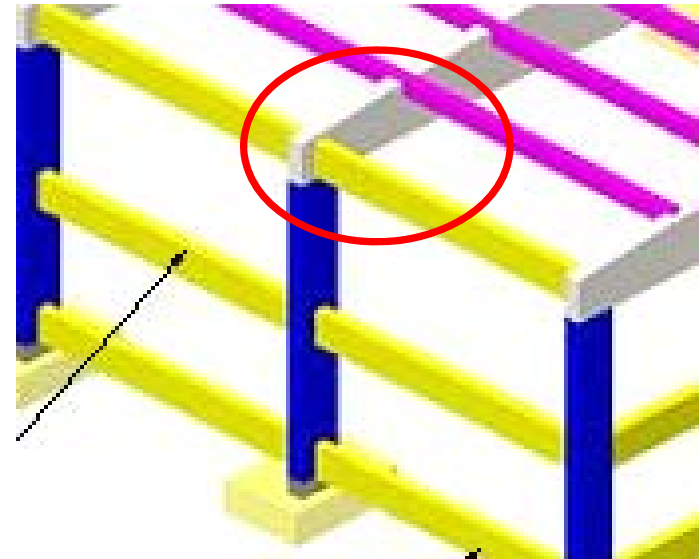
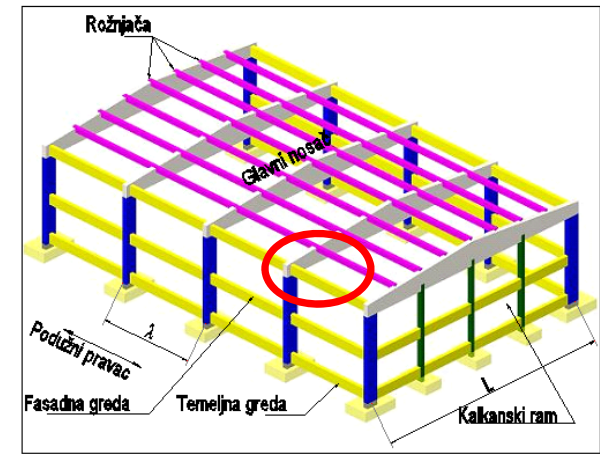
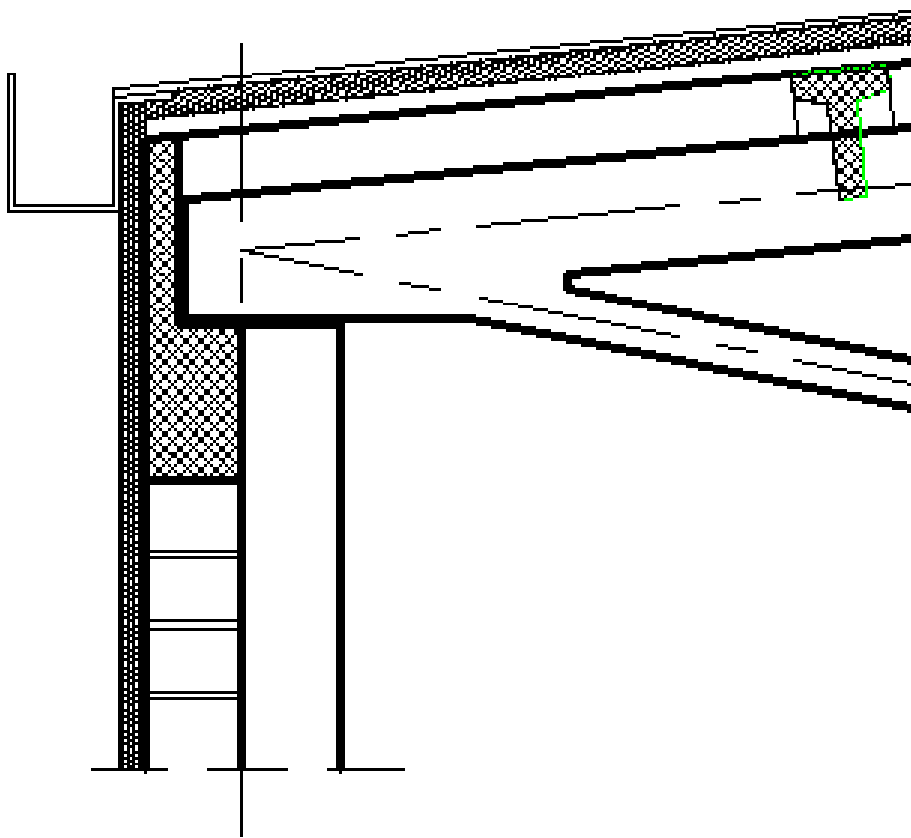
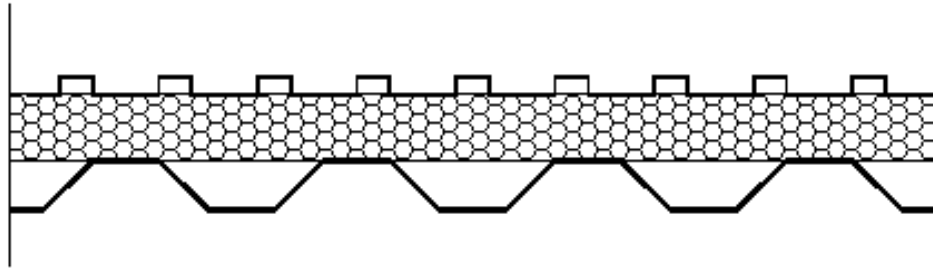


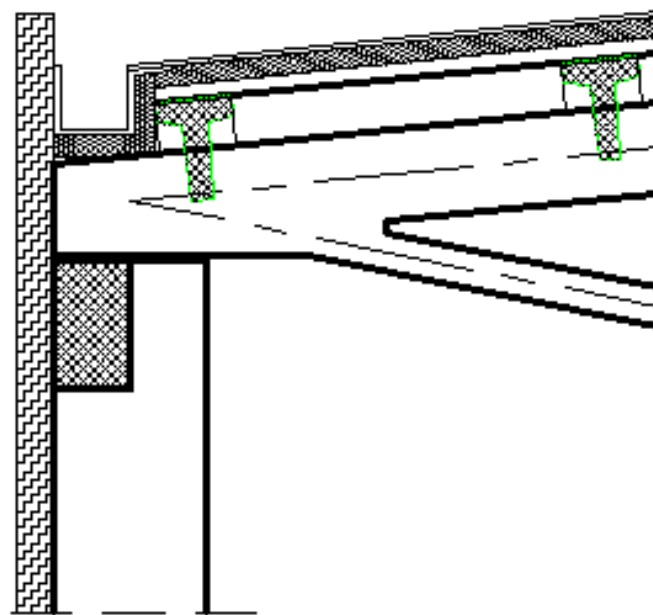
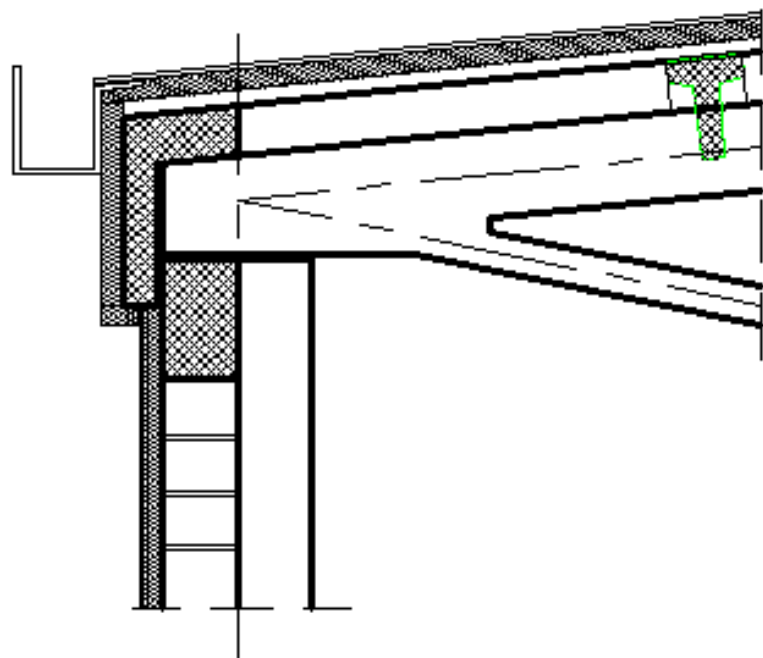
PROJEKTOVANJE I GRAĐENJE BETONSKIH KONSTRUKCIJA 2

2

V.prof dr Branko Milosavljević, dipl.građ.inž.







Glavni nosači industrijskih hala

Punog poprečnog preseka



Rešetkasti nosači



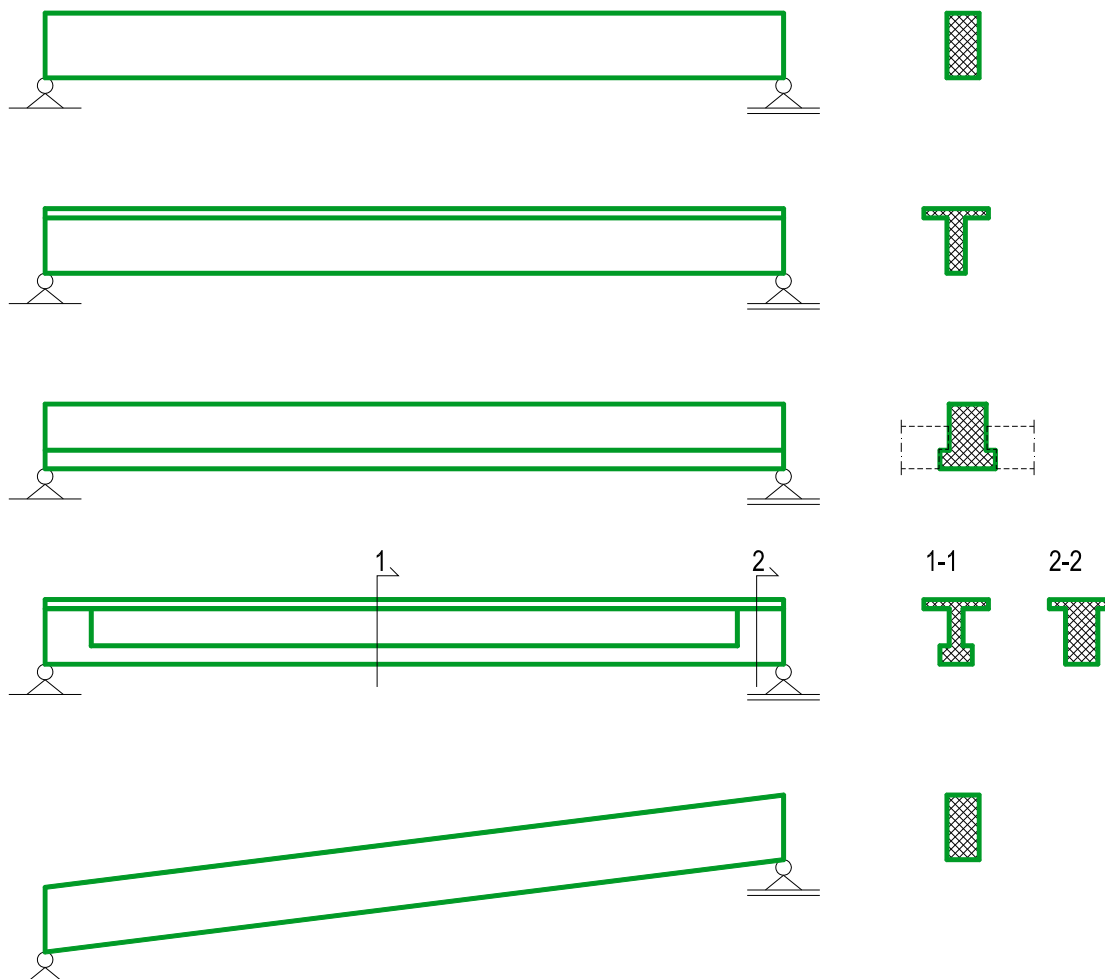
Nosači sa zategom
(dvopojasni sistemi)



Klasično armirani ili prethodnonapregnuti

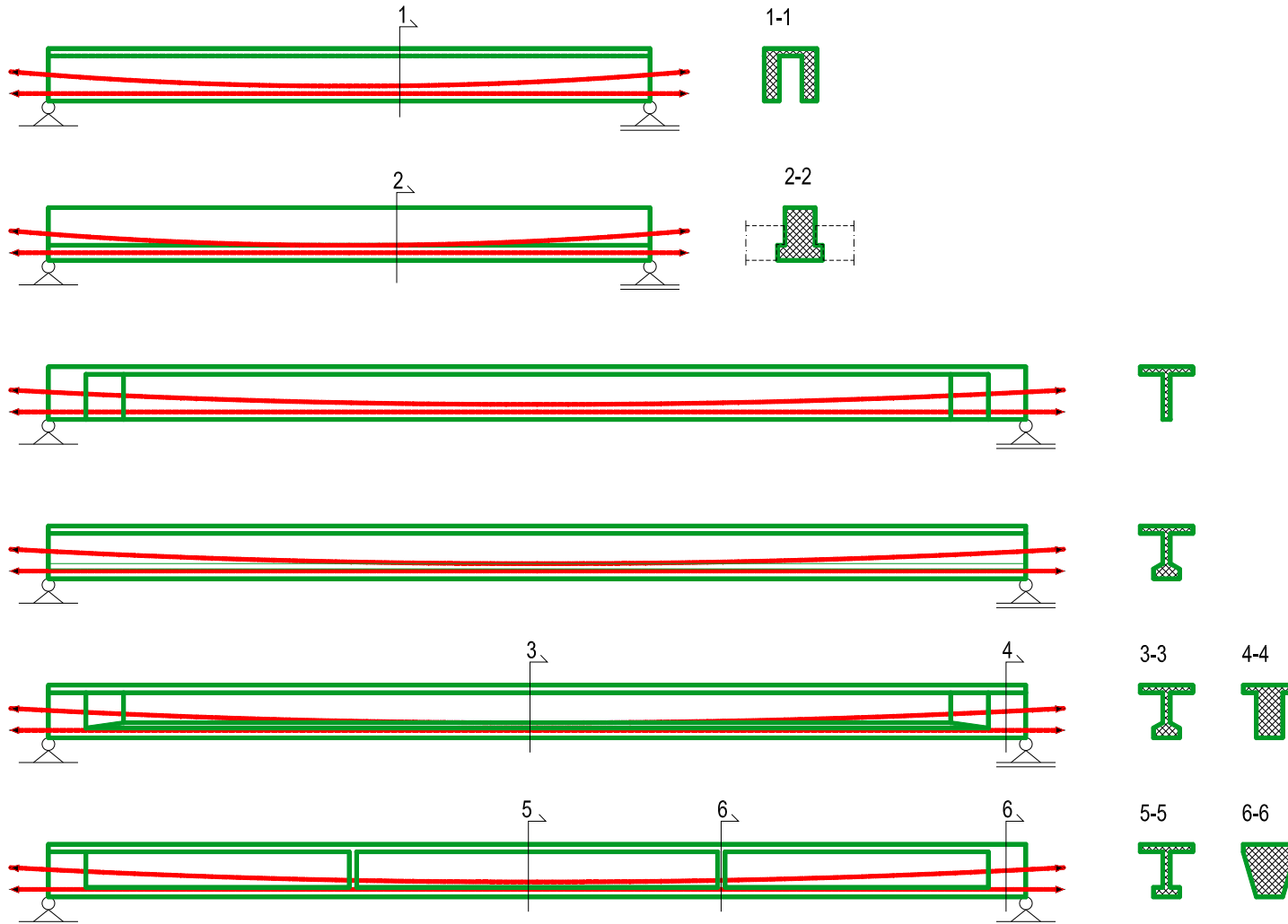
Glavni nosači ind. hala

Armiranobetonski $L < 20\text{m}$



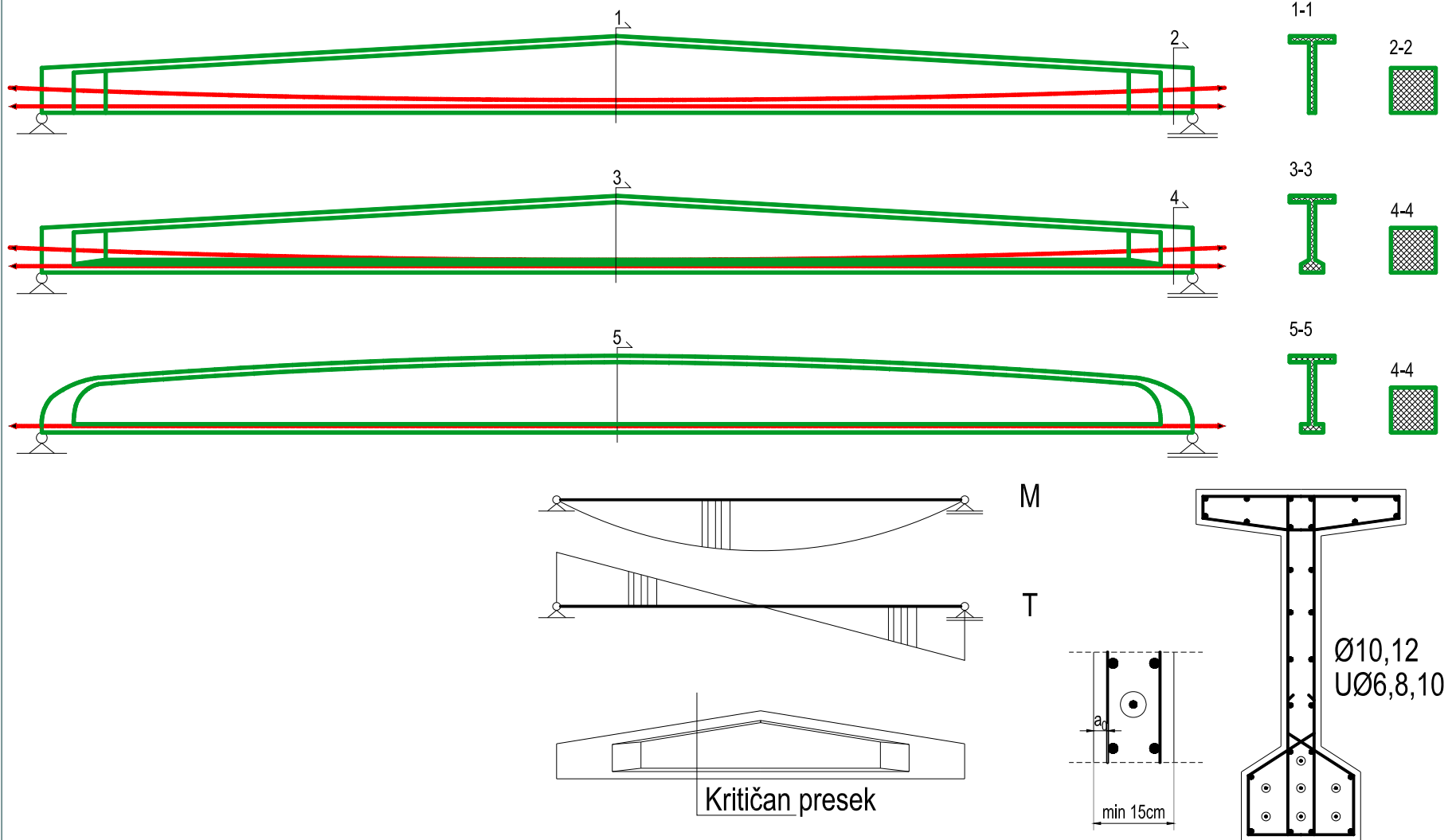
Glavni nosači ind. hala

Armiranobetonski (AB) ili prethodno napregnuti (PN)



Glavni nosači ind. hala

Prethodno napregnuti ($L < 40\text{m}$)



Montaža glavnog nosača

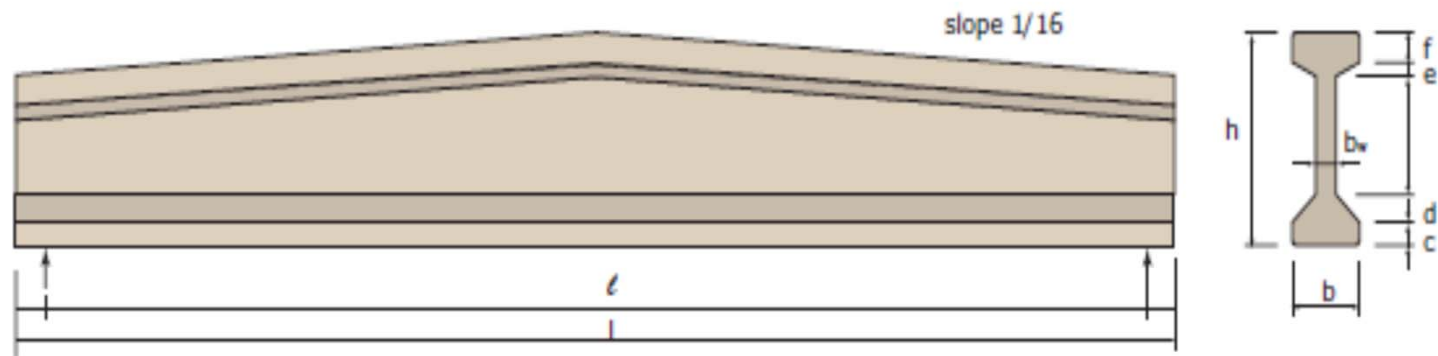


Montirani glavni nosači i rožnjače

Rožnjača



Prethodno napregnuti GN - izvod iz prospekta



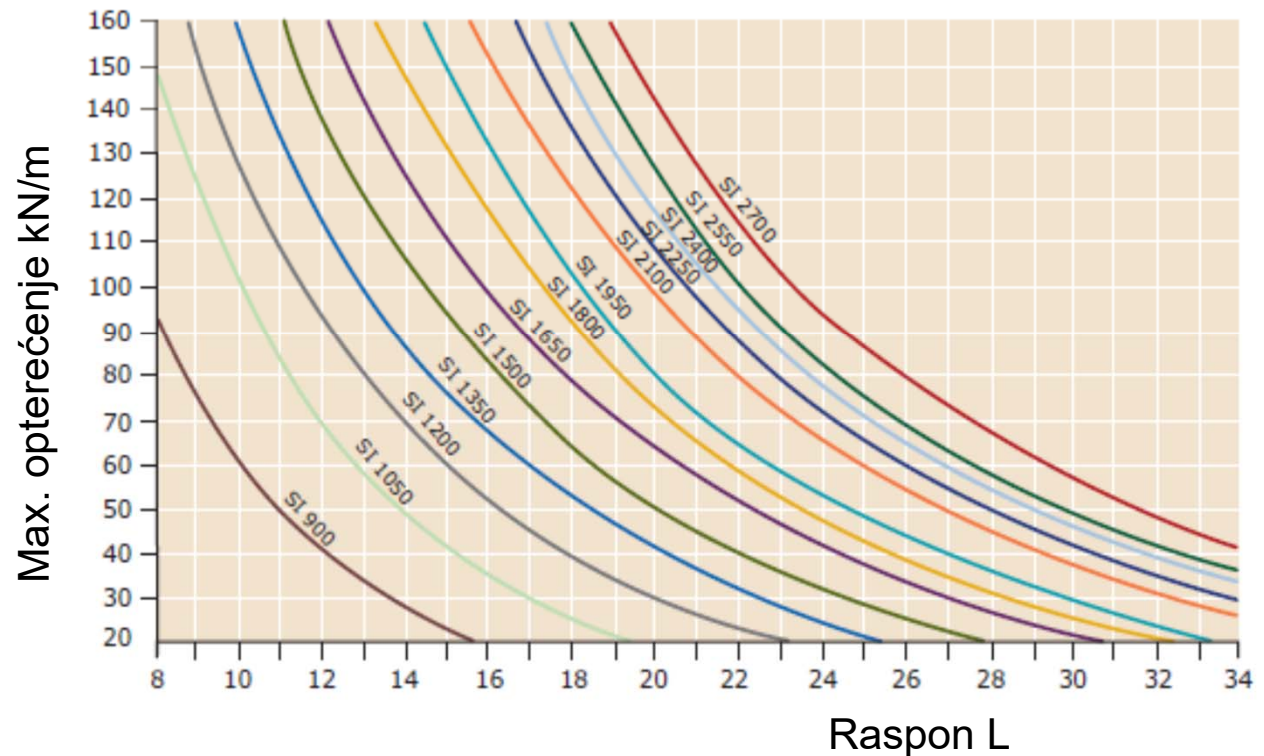
Profile	h	b	c	d	e	f	b _w	L _{min}	L _{max}
SI 900/500	900	500	150	190	95	150	120	6000	12000
SI 1050/500	1050	500	150	190	95	150	120	6000	12000
SI 1200/500	1200	500	150	190	95	150	120	8000	16000
SI 1350/500	1350	500	150	190	95	150	120	10000	20000
SI 1500/500	1500	500	150	190	95	150	120	12000	25000
SI 1650/500	1650	500	150	190	95	150	120	14000	28000
SI 1800/500	1800	500	150	190	95	150	120	15000	30000
SI 1950/500	1950	500	150	190	95	150	120	16000	32000

Izvor

CONSOLIS

Prethodno napregnuti GN - izvod iz prospekta

Profile	h	b	c	d	e	f	b _w	L _{min}	L _{max}
SI 900/500	900	500	150	190	95	150	120	6000	12000
SI 1050/500	1050	500	150	190	95	150	120	6000	12000
SI 1200/500	1200	500	150	190	95	150	120	8000	16000
SI 1350/500	1350	500	150	190	95	150	120	10000	20000
SI 1500/500	1500	500	150	190	95	150	120	12000	25000
SI 1650/500	1650	500	150	190	95	150	120	14000	28000
SI 1800/500	1800	500	150	190	95	150	120	15000	30000
SI 1950/500	1950	500	150	190	95	150	120	16000	32000

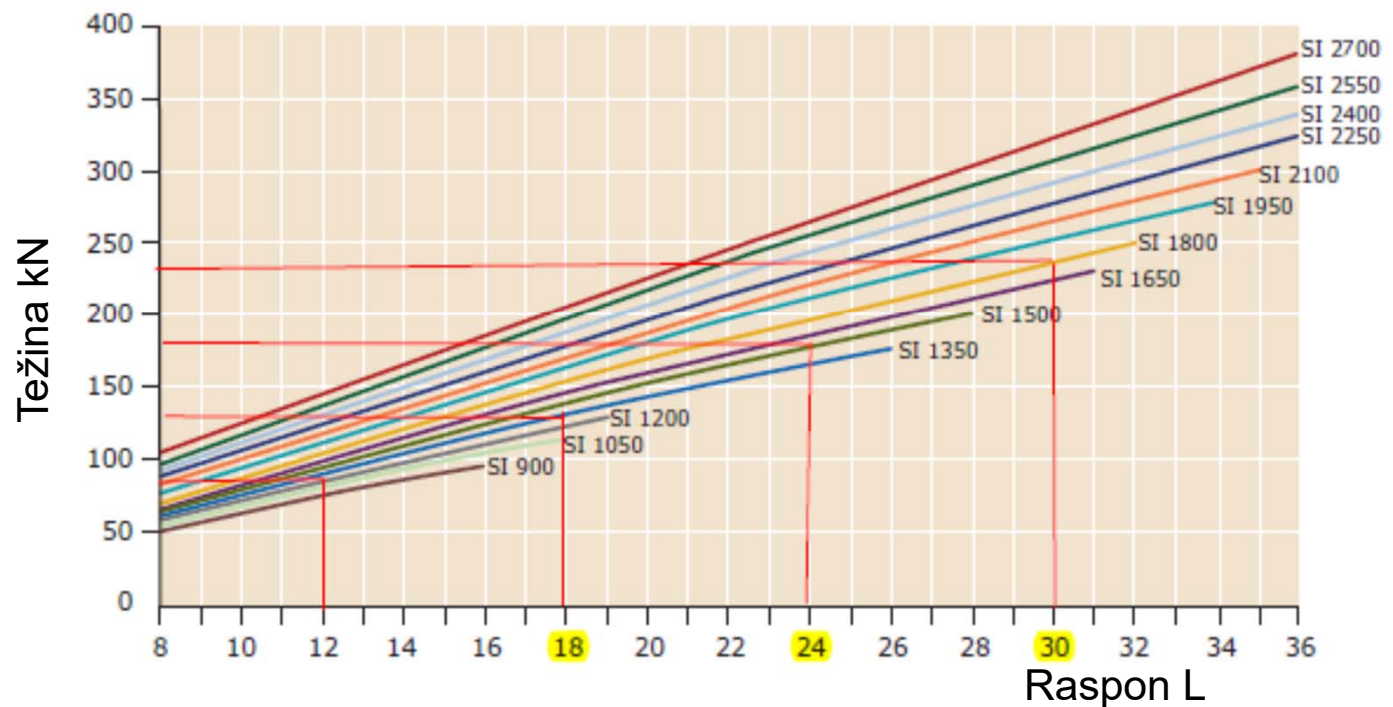


Izvor

CONSOLIS

Prethodno napregnuti GN - izvod iz prospekta

Profile	h	b	c	d	e	f	b _w	L _{min}	L _{max}
SI 900/500	900	500	150	190	95	150	120	6000	12000
SI 1050/500	1050	500	150	190	95	150	120	6000	12000
SI 1200/500	1200	500	150	190	95	150	120	8000	16000
SI 1350/500	1350	500	150	190	95	150	120	10000	20000
SI 1500/500	1500	500	150	190	95	150	120	12000	25000
SI 1650/500	1650	500	150	190	95	150	120	14000	28000
SI 1800/500	1800	500	150	190	95	150	120	15000	30000
SI 1950/500	1950	500	150	190	95	150	120	16000	32000



Izvor

CONSOLIS

Transport prethodno napregnutog GN



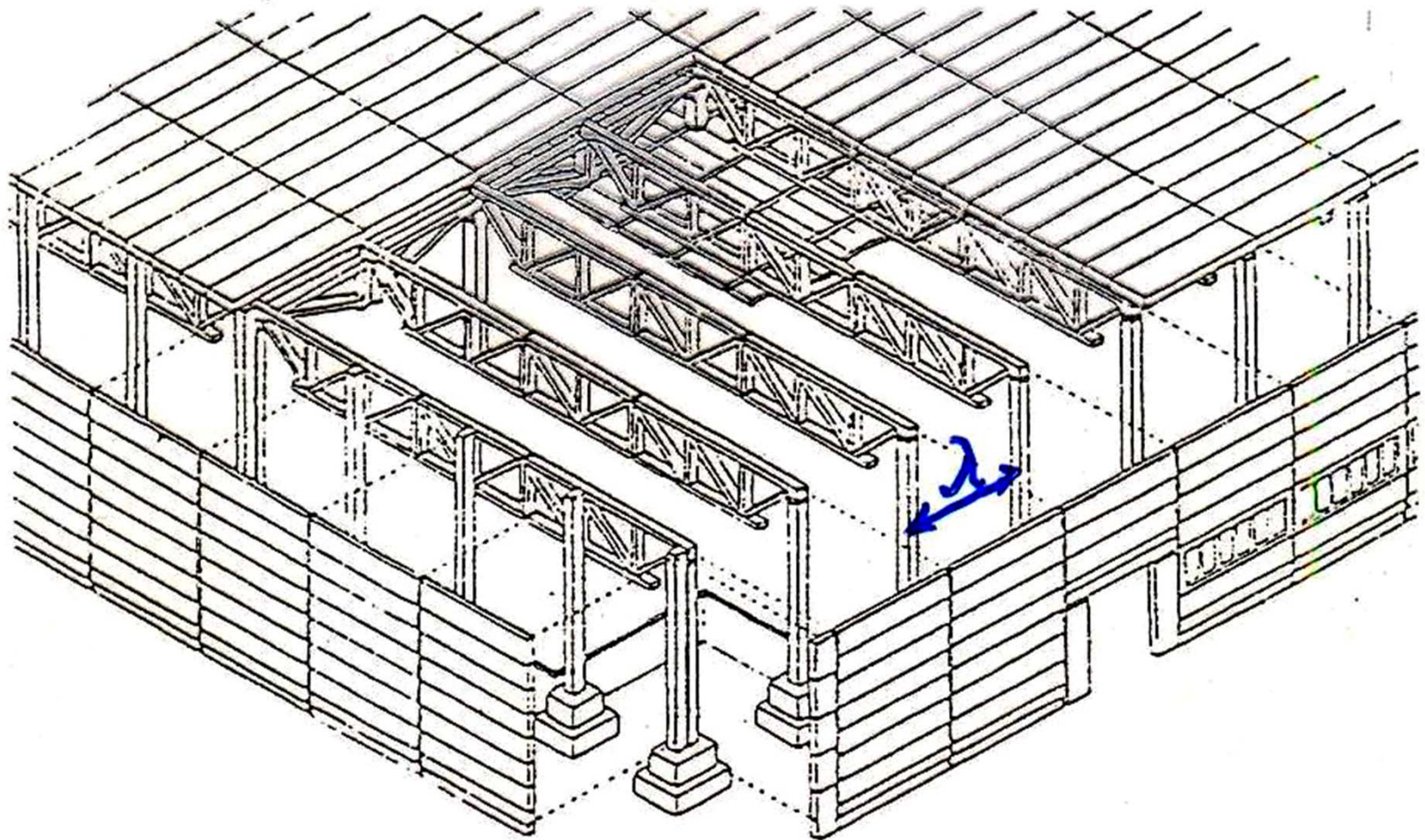
Montaža GN i rožnjača

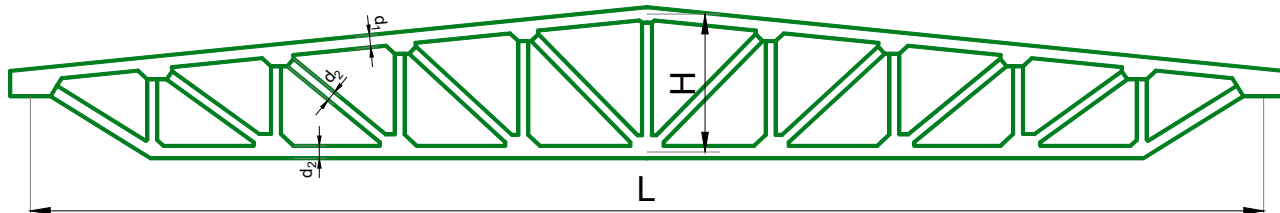


Primer hale sa međuspratnom konstrukcijom



Rešetkasti glavni nosači

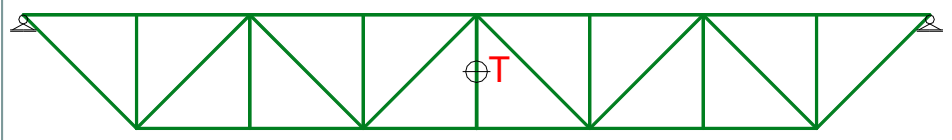




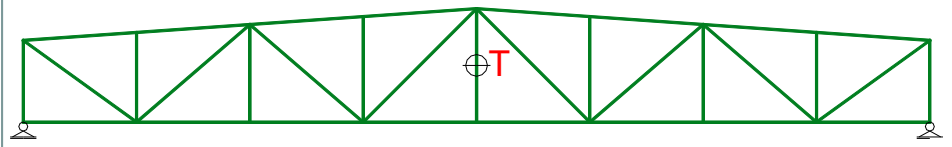
Oblikovanje štapova rešetke – veća širina preseka b od visine d

- Manja krutost na savijanje u ravni rešetke (oko hor. ose preseka) – smanjenje sekundarnih momenata u čvorovima
- Veća bočna stabilnost nosača (faza montaže)

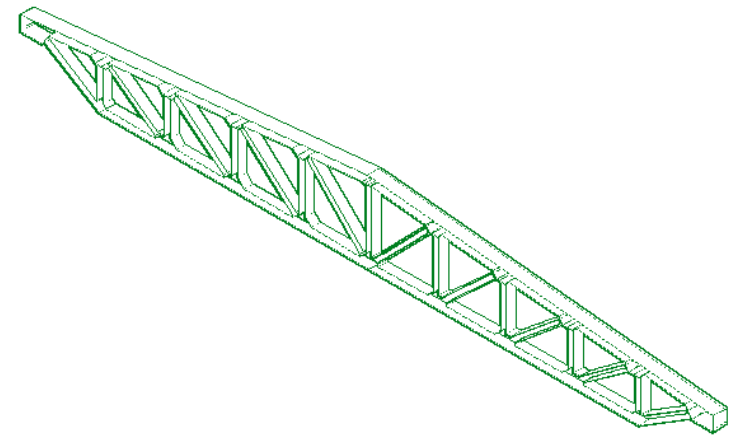
Autostabilnost rešetke



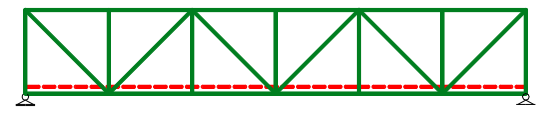
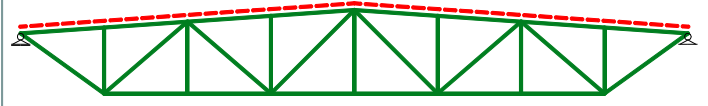
Autostabilna



Autonestabilna



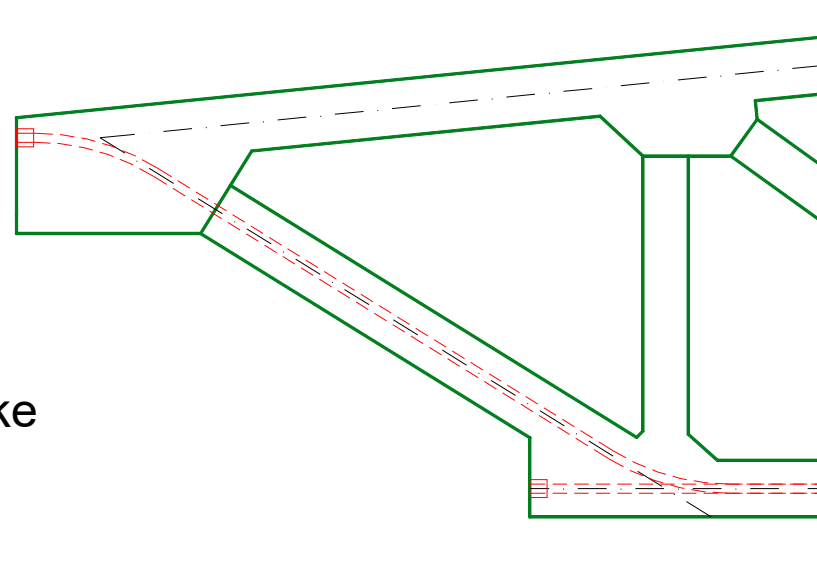
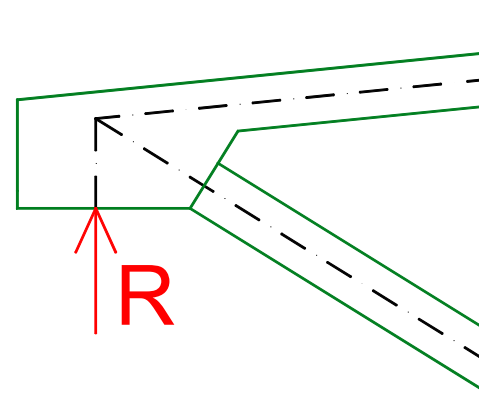
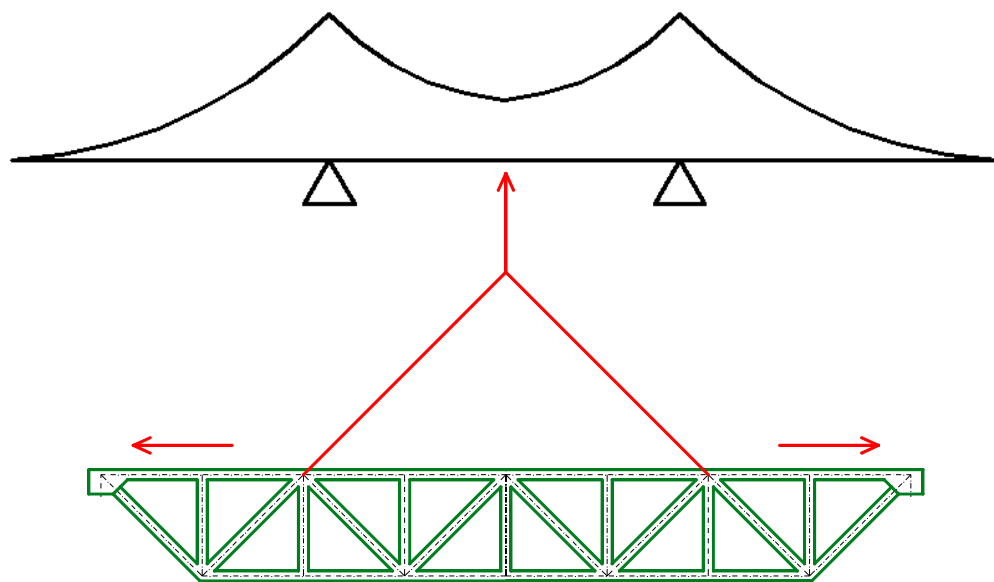
Položaj krovne ravni



Visina rešetke H u funkciji od raspona L
 $H=L/10 - L/8$

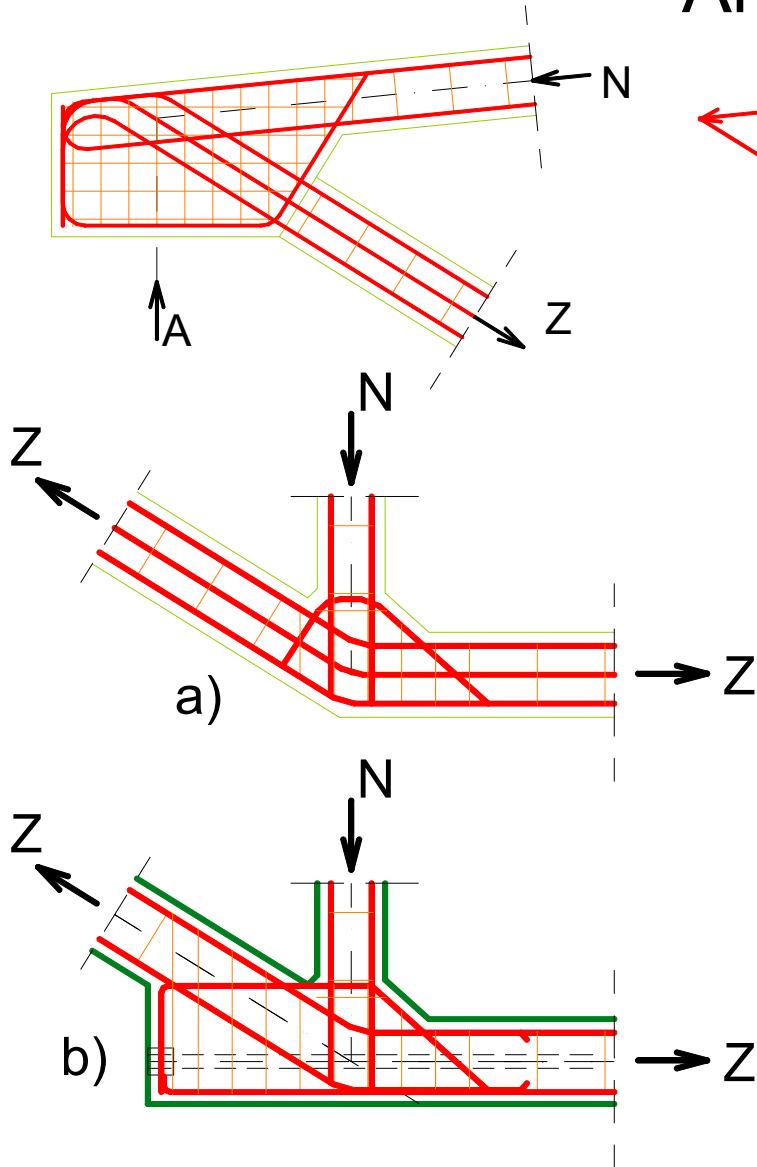
Faza montaže – promena statičkog sistema

Centrisanje čvora

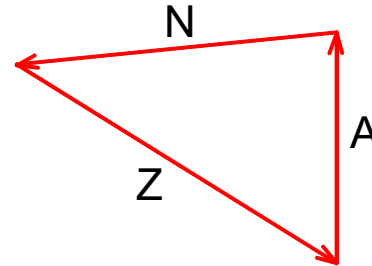


Prednaprežanje štapova rešetke

Oslonački čvor



Armiranje čvorova rešetke

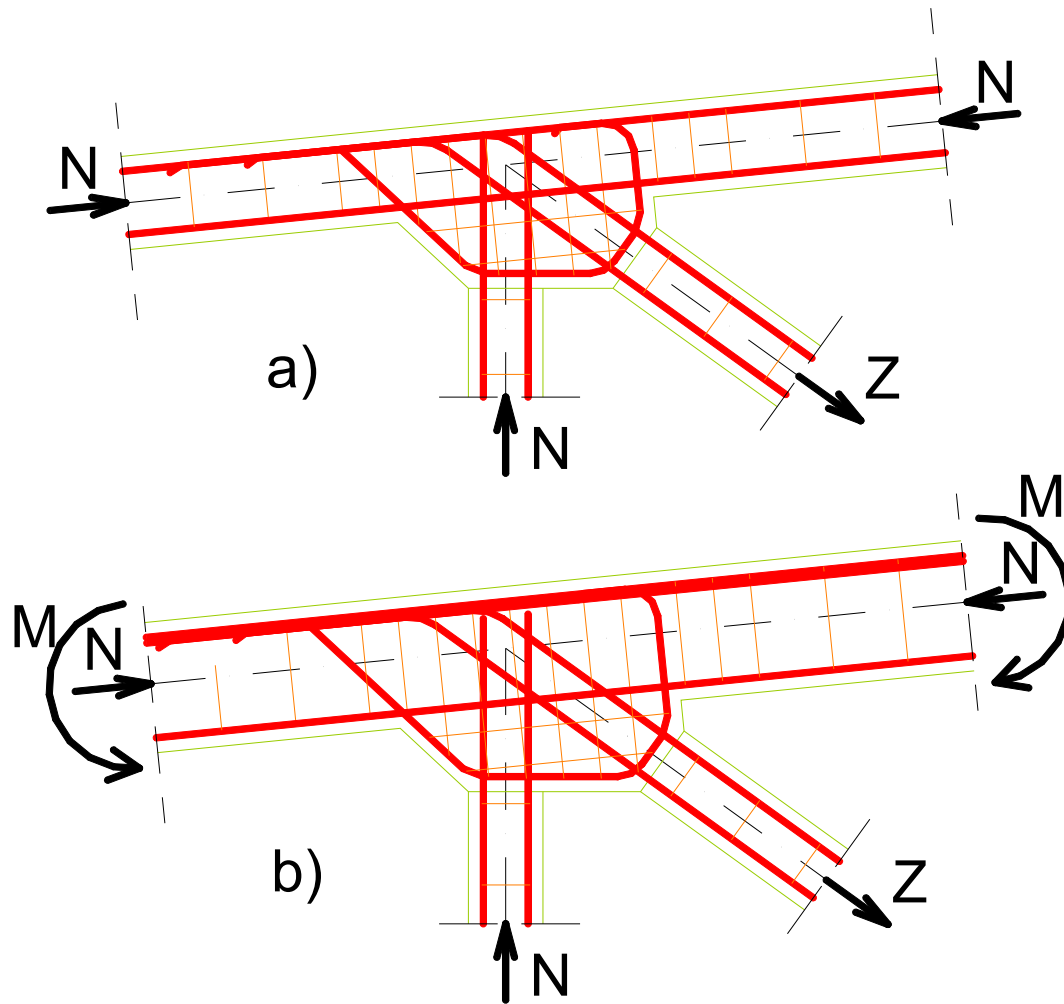


Čvor donjeg pojasa:

a) klasično armiran

b) prednapregnut

Armiranje čvorova rešetke



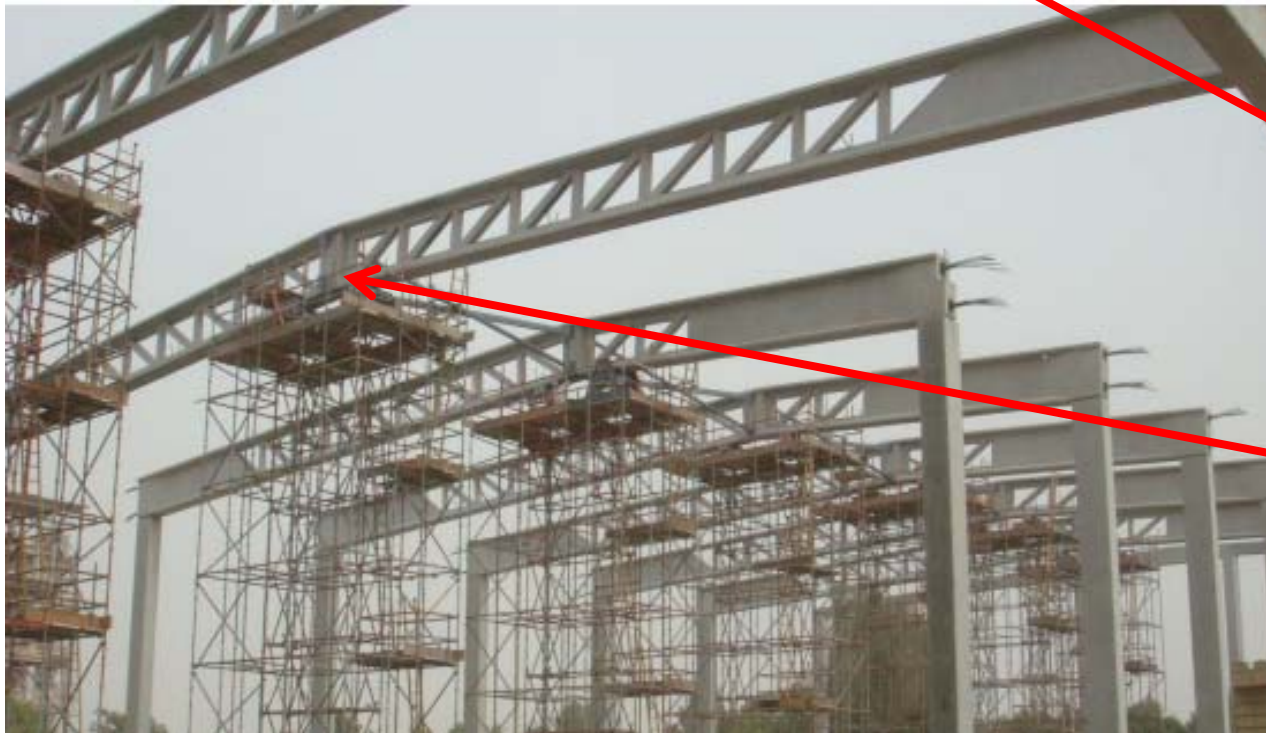
Čvor gornjeg pojasa:

a) centrično napregnut

b) ekscentrično
napregnut (savijen)

Prethodno napregnuti rešetkasti GN





- a) Mala visina nosača
- b) Montažni spoj na toranjskoj skeli

Izrada u oplati u horizontalnom pložaju

